

Sentinel Products Ltd

DeviceShield

Quick Start Guide

Contents

PRE-INSTALLATION.....	3
<i>I. Installing SQL Server Express edition</i>	<i>3</i>
<i>II. Enabling Remote Authentication</i>	<i>3</i>
<i>III. Enabling both the "SQL Server Authentication" and "Windows Authentication" methods on the server.....</i>	<i>5</i>
INSTALLATION	7
PRODUCT ACTIVATION.....	11
SECURITY ISSUES.....	12

Pre-installation

DeviceShield™ is a very compact product and as such the installation is a largely automated process. **DeviceShield™** is only installed on to a single PC from where the program will be administered, policies defined and the client deployed to all PCs that are to be protected. You do not need to install **DeviceShield™** onto the other PCs in your network.

Before you can proceed with the installation, there are three things you will need to do ...

I. Install SQL Server (if one does not currently exists on your machine)

II. Enable Remote Authentication using TCP/IP and Named Pipes.

III. Enable both the "SQL Server Authentication" and "Windows Authentication" methods on the server.

Note:

Examples here are shown using the Microsoft SQL Server 2005 Management Studio Express edition (included on the DeviceShield installation disk).

Supported databases include SQL Server 2000, 2005, 2008, and express editions. You may also use your choice of management studio.

I. Installing SQL Server Express edition

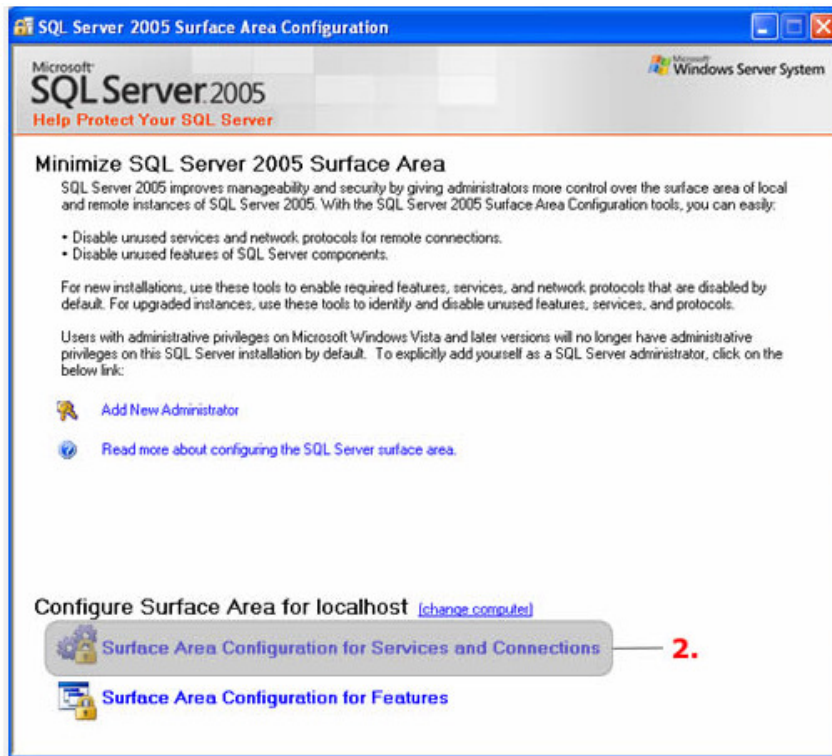
To install SQL Server Express, please visit

<http://www.microsoft.com/sql/editions/express/default.mspx>

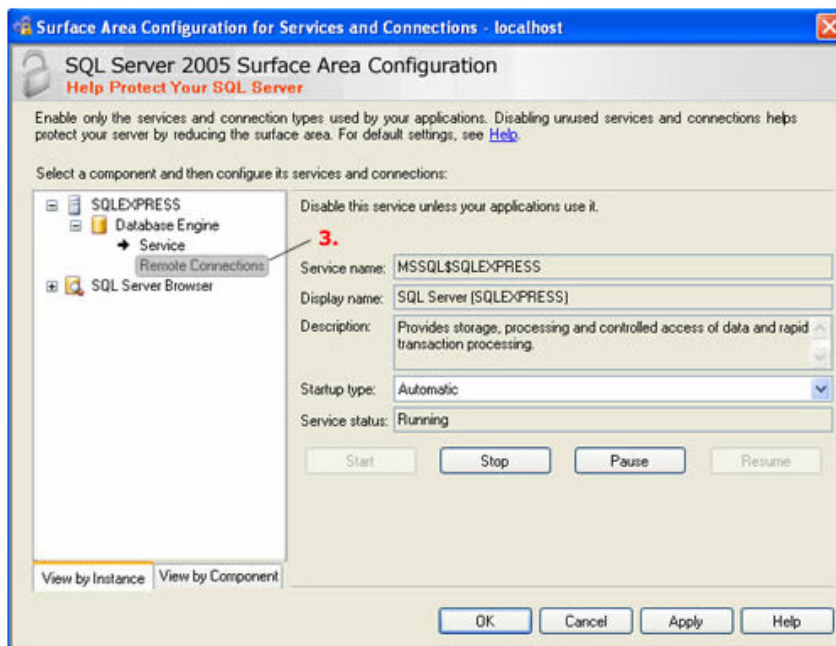
II. Enabling Remote Authentication



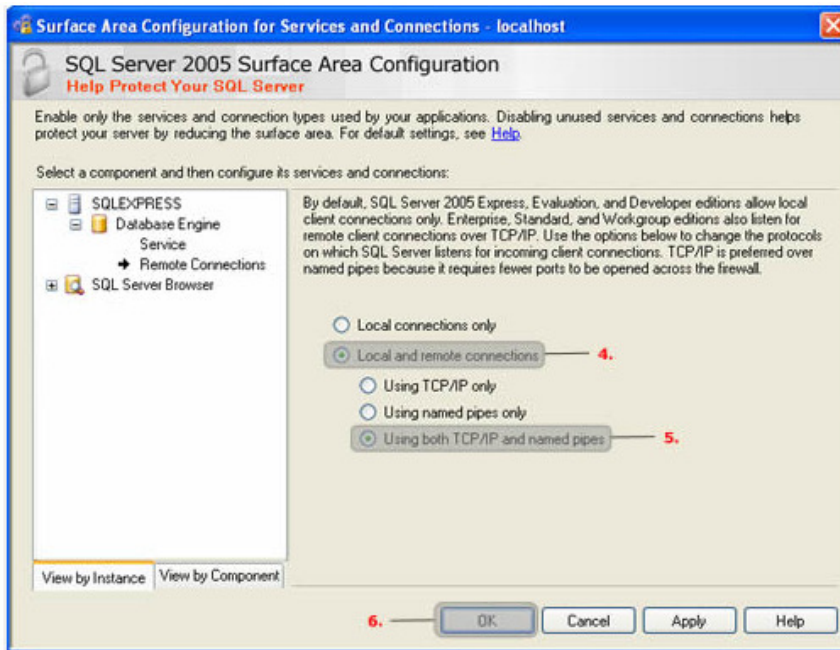
- 1) Go to "start" then "program files" and select the SQL Server Surface Area Configuration option from the Microsoft SQL Server 2005 menu.



- 2) Click on the "Surface Area Configuration for Services and Connections" option.



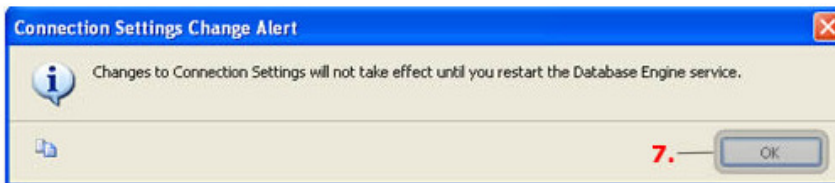
- 3) Click on "Remote Connections" from the left pane.



4) Select the "Local and remote connections" option by clicking on the radio button.

5) Select "Using both TCP/IP and named pipes" by clicking on its radio button.

6) Click "OK".

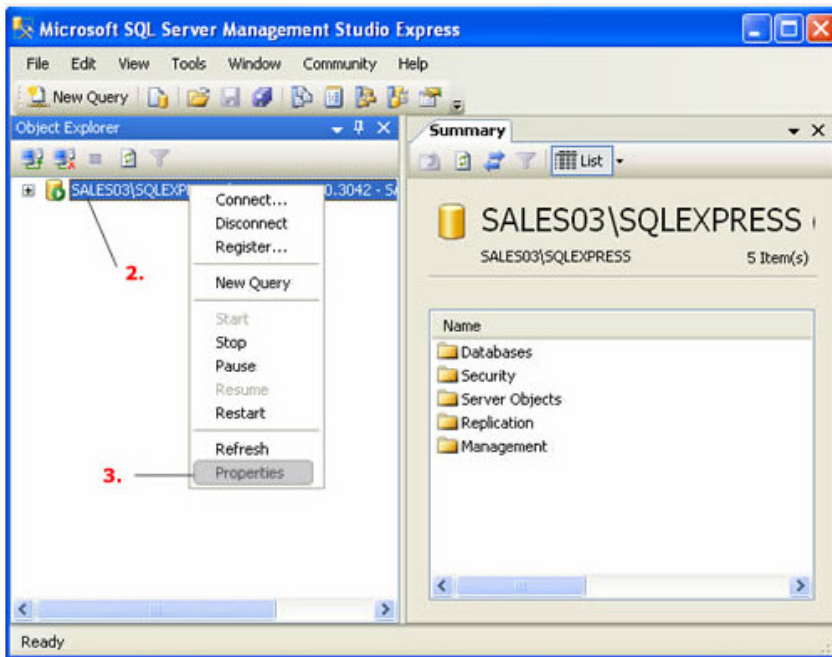


7) On the "Connection Settings Change Alert" window, click "OK".

8) Close the "SQL Server 2005 Surface Area Configuration" dialog box.

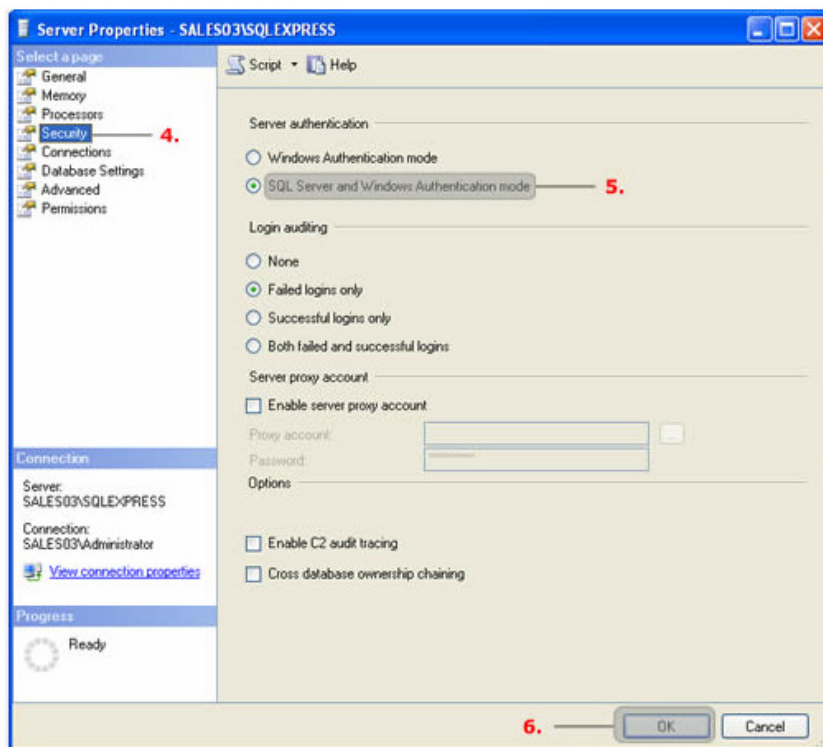
III. Enabling both the "SQL Server Authentication" and "Windows Authentication" methods on the server.

1) Open Microsoft SQL Server Management Studio.



2) Right click the server name.

3) Select "Properties" from the drop-down menu.



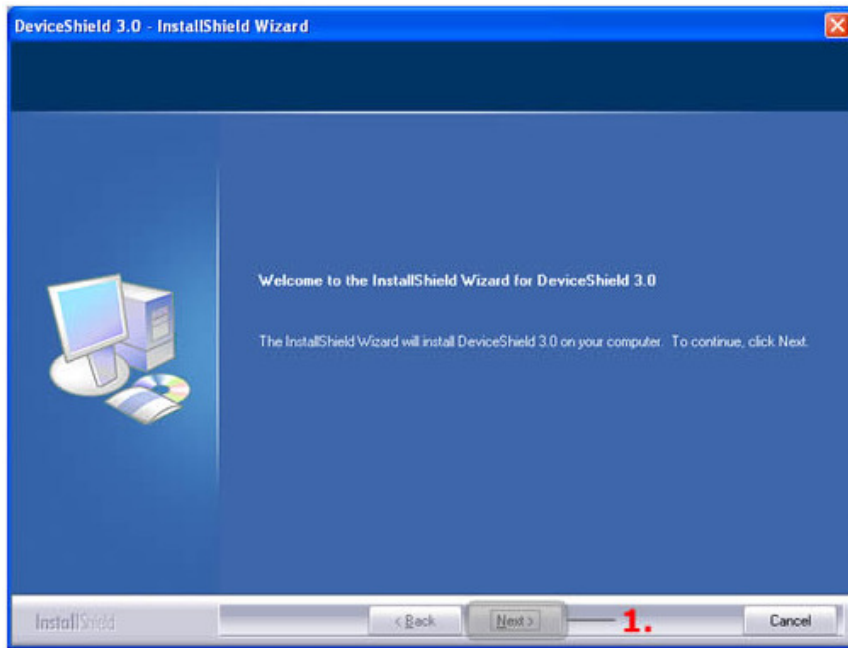
4) Select the "Security" option from the left pane.

5) Select the "SQL Server and Windows Authentication mode" by clicking on its radio button.

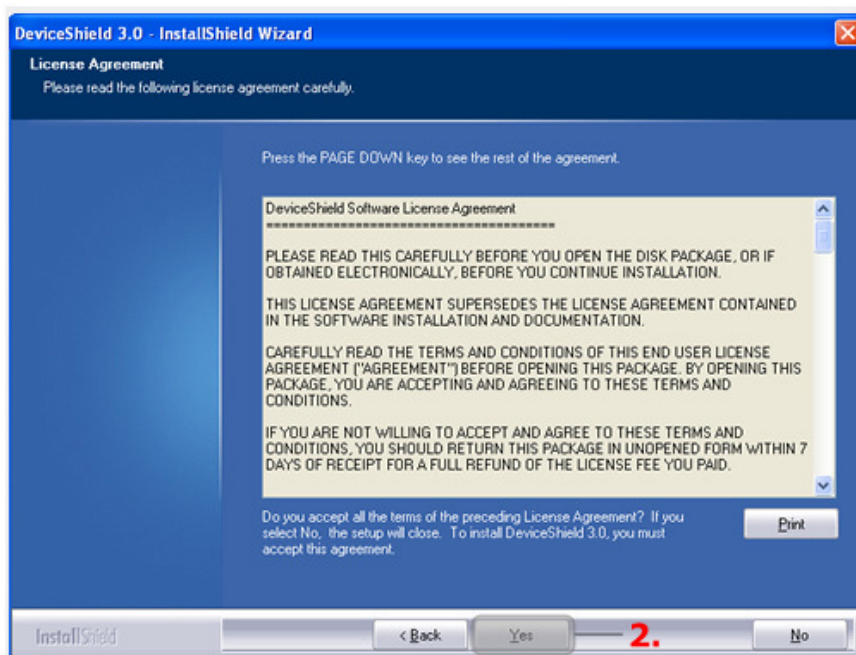
6) Click "OK".

Installation

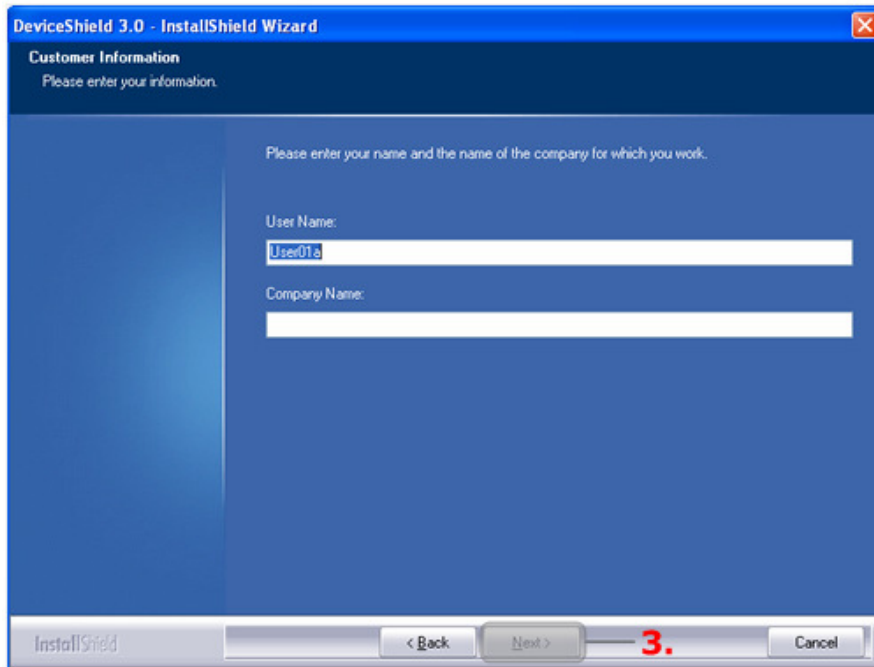
To install **DeviceShield™**, double click on the downloaded file “DSTrial.exe”. The installation procedure will start automatically. Select the appropriate install option then click next.



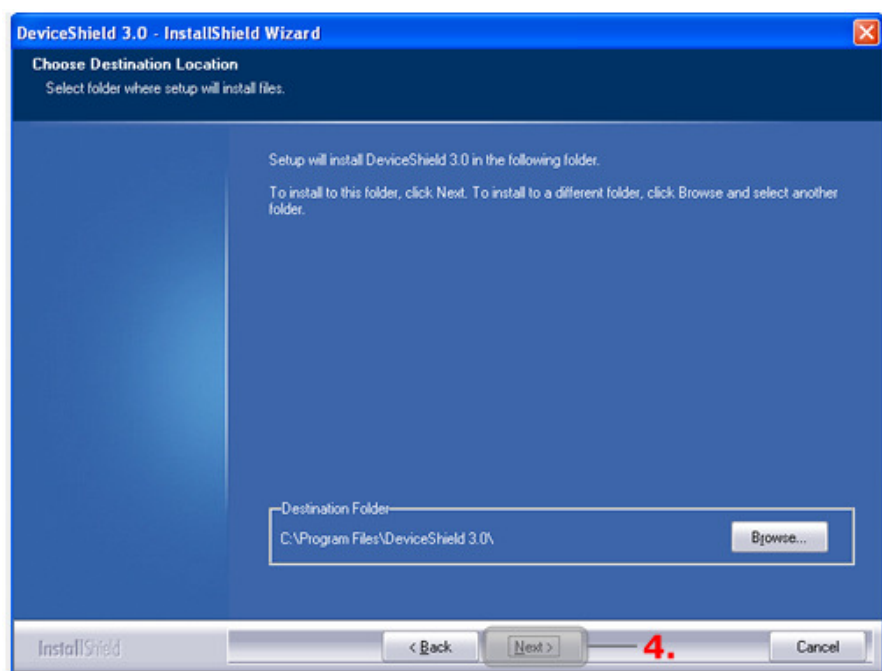
1. At the welcome screen, click "Next".



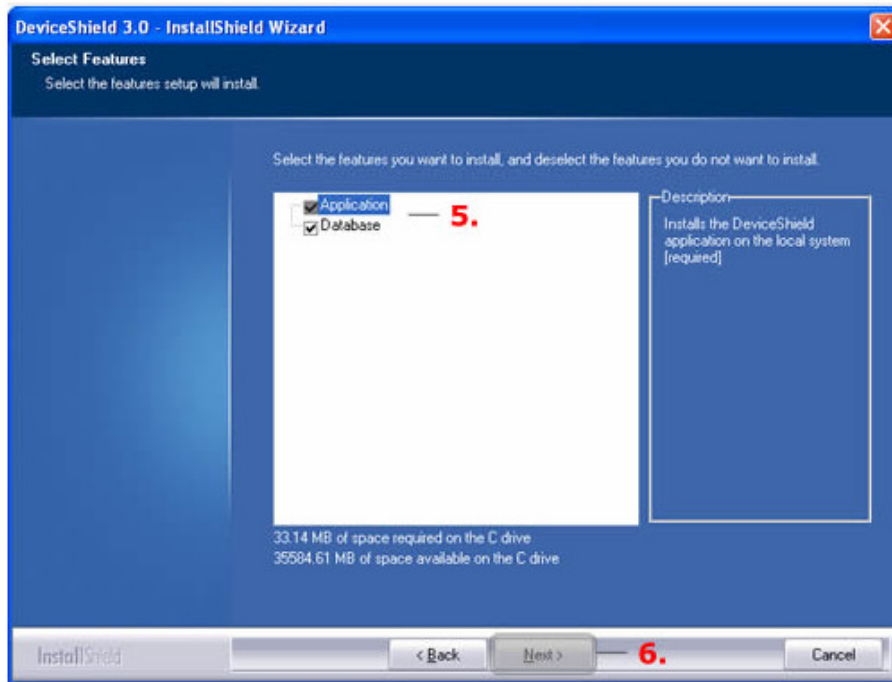
2. On the License Agreement page, please read it in its entirety. If you wish to print the License Agreement, click the "Print" button located just below the document. If you do not agree with the license agreement, click "No" to exit out of the application. Otherwise click "Yes" to continue.



3. On customer information screen, please enter both a "User Name" and "Company Name". Click "Next to continue.



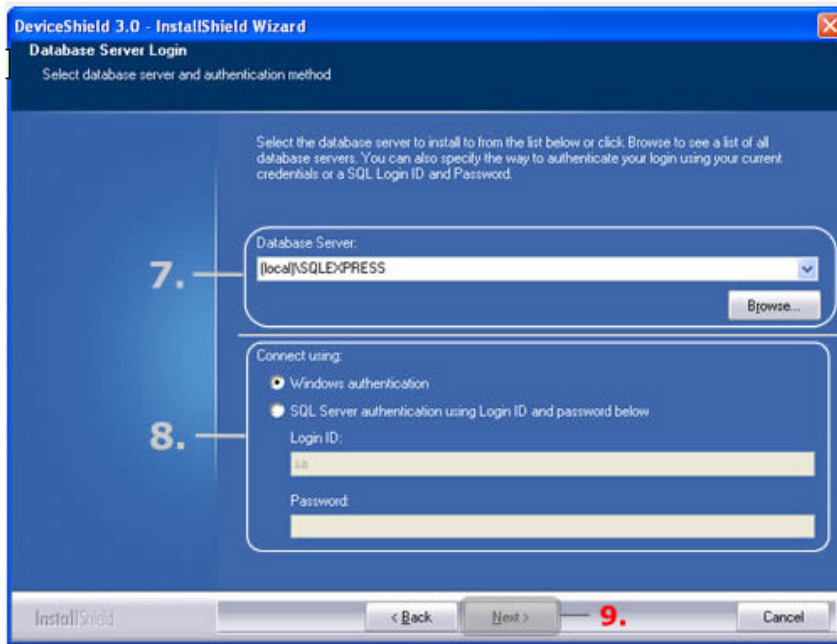
4. On the choose destination location window, please choose the location in which you would like the program to install. The "C:\Program Files\DeviceShield 3.0" is the default path and directory, and is the one that is most recommended.



5. On the select features window you will be selecting the applications in which you choose to install. For first-time installations to the PC of choice, you will want to make sure that both "Application" and "Database" are selected. If you are installing DeviceShield over your current installation, or you are doing an uninstall then re-install and this is not the first time you are installing DeviceShield to this system, then the Database may already be installed on the computer.

Note: If you check both options, the current database on your system will not be overwritten. If you would like to obtain a fresh installation of the database, you will need to log into SQL Server and remove the database manually, then re-install DeviceShield.

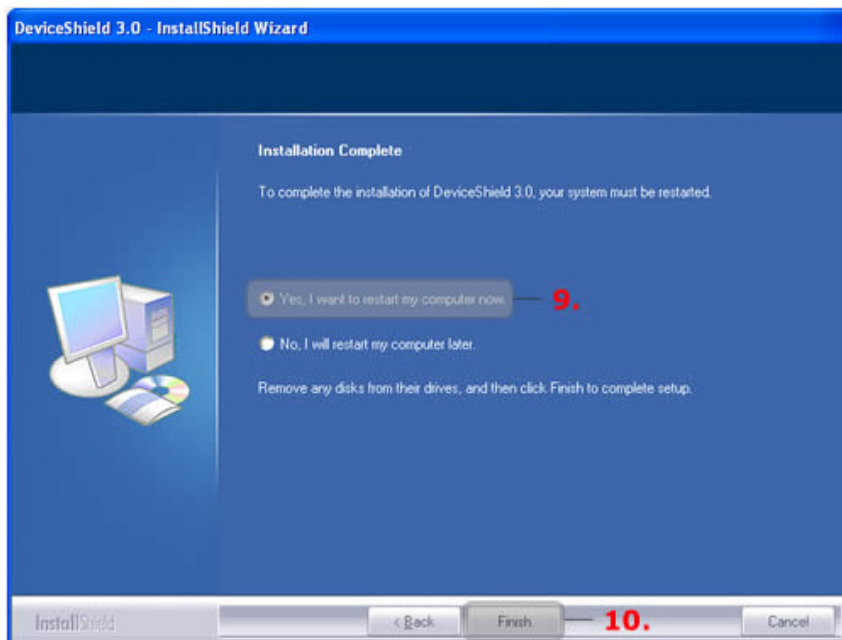
6. Click "Next" to continue.



7. In the database server login window, select the database server you would like the database to be installed to from the drop down menu. If it is not listed, then click "Browse ..." to find the desired SQL Server.

Ex: computer name or domain name\name of server

8. Please choose from the menu the connection method you would like to use.



9. Save and close any programs you may have open. Next, select the option to re-start your computer.

10. Click "Finish".

Product Activation

Before DeviceShield™ can be used fully it must be activated. If you do not activate DeviceShield™, it will run in a limited, evaluation mode and will only allow you to control a maximum of 5 PCs.

Activating **DeviceShield™** can be done either from the License Details startup screen or by clicking **Activate** on the **Help>About DeviceShield™** screen within the product.

To receive your activation details please contact your reseller or the Sentinel sales department on Tel: +44 (0) 1403 754702

Click on the **Activate** button to display the product activation window. Enter your registered company name and ID into the appropriate fields and click **Register**.



If your key is not accepted, carefully check the values entered. The key comprises of 5 groups of 5 alphanumeric characters. To avoid confusion, the key will always be all upper case and will not contain the letters 'l' or 'O' or the digits '1' or '0'.

Once activated, **DeviceShield™** can be used as normal to control the number of PCs for which you have purchased a license. The license details are displayed at startup and can also be viewed on the **Help > About DeviceShield™** screen.

Note: If you choose not to activate DeviceShield™, it will run in evaluation mode and will only allow a limited number of PCs to be controlled!

Security Issues

To make full use of **DeviceShield™**, you MUST be logged in as a Domain Administrator. This is necessary as **DeviceShield™** will be used to apply security policies to the PCs in your network. As such, **DeviceShield™** will need to establish a remote connection to the other PCs in the network, copy files to them and install and start a Windows Service which will control the use of Removable Media Devices.

Please ensure the security of **DeviceShield™** by ensuring that only authorized users are able to access the software.