



Ranger Print Manager

Giving you control over printing costs

Manage resources and expenses more effectively!

Across the UK, a staggering one in five pages printed remains in the printer tray, gets lost on a desk or heads straight for the bin*. The environmental impact of this wastage is vast, not to mention the financial loss! This is why 'green' is the way forward for schools and colleges of the future – and where Ranger Print Manager can lend a hand.

With Ranger Print Manager, you can reduce paper wastage and closely control the costs of excessive printing, making staff and students more accountable for their resource usage.

Print Manager enables you to quickly and easily forecast, control and account for printing across your network, helping you to manage associated costs more effectively.

Applying different costs to different printers, allocating print quotas and configuring printing on a user-pays basis – this invaluable product will soon pay for itself!

Helping to cut costs and protect the environment...

Increase efficiency and control

Ranger Print Manager can be managed centrally and run from anywhere on your network, saving you time and effort. It allows you to see what is being printed, where and by whom, to evaluate whether resources are being over- or under-used and to control closely those costs associated with your school or college's printing activity.

Encourage accountability

Help staff and students to understand the cost and environmental implications of print activity, by setting credit limits for individual or departmental accounts and displaying customised messages, if users run out of credit. With Ranger Print Manager, you can choose to disable printing, until credit is renewed, or set an overdraft amount which will allow users to complete one last job. Users can also view individual or departmental balances and print history details to keep a track of their print account.

Recover the cost of consumables

By using Ranger Print Manager to analyse print activity, you will be better informed to implement plans to recover the cost of consumables – and help this invaluable tool to pay for itself! For example, you could apply different charges for black/colour or single-/double-sided printing and even charge extra for one page containing colour in a multipage document.

Benefits

- Reduces paper wastage.
- Helps you to forecast, control and manage print costs more effectively.
- Enables recovery of the cost of your printing consumables.
- Makes staff and students accountable for their resource usage.
 - Charge students for all printing or once they exceed their allocated print quota.
 - Staff can charge against their department budget or against their own account, for personal printing.
 - Option to manage payment with vouchers/receipts.
- Users can view individual or departmental balances and print history details.
- Central management of your printers, from anywhere on the network, saves time and effort.

Features

- Designed specifically for education.
- Simple to install and easy to operate.
- Setup wizard helps you to get started quickly and easily.
- Requires no new hardware or additional software.
- Web console for configuration and administration.
- Different printer-based charge rates, enabling you to apply different charges for black/colour or single-/double-sided printing.
- Record the total number of jobs and pages printed for departments, users and printers.
- Supports PCL5, PCL6, Postscript and ESC/P2 (Epson) and most GDI printers, as well as any printer whose driver uses Windows EMF spool format. Colour detection is not currently supported for Postscript printers*.

*Evaluation of Ranger Print Manager is recommended to confirm compatibility.

*Lexmark research. 'Paper paralysis costs London £31.1m' September 2005



Solution comparison

Feature	Ranger Print Manager	Windows Print Management
Charge users for printing	YES	No
Prevent unwanted copies, using print release	YES	No
Limit print job size	YES	No
Limit number of pages	YES	No
Restrict print on colour and size of paper	YES	No
Logging	YES	Yes
Reporting	YES	No

The right choice

When it comes to specific requirements for your school or college, you're the expert – we just provide you with the tools to help you to achieve your network management objectives, in the most effective way possible.

Ranger offers a comprehensive portfolio of products, to simplify and enhance your basic network – and you're free to select the best combination to suit your specific needs.

So, there isn't one 'right' way of doing things – just the right choice of partner...

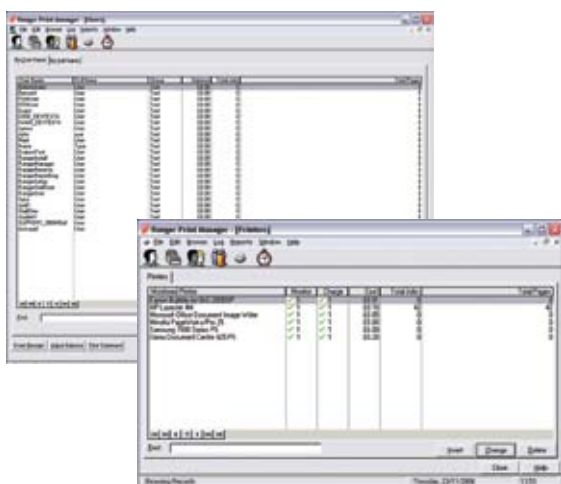
But don't take just our word for it!

"We felt that the Ranger suite of products provided the best end-to-end solution for our 'school of the future.' Print Manager gives us the ability to tightly manage the cost of printing within the school's entire network."

Steve Smith, ICT Network Manager, Oxclose Community School, Tyne and Wear

"Print Manager is proving an effective and reliable means of monitoring and applying charges for students' print usage. The ability of students to monitor their print accounts will help reduce wastage of expensive resources."

Colin Thomas, IT Network Administrator, Rossall School, Lancashire



For more information, please contact:



To find out more about Ranger for Networks or any other products available from Ranger:
www.rangersuite.com +44 (0)1403 754702