

**AMI Education
Solutions Ltd** | **Ranger Guardian**
Product Information Guide

Table of Contents

RANGER GUARDIAN PRODUCT OVERVIEW	3
INTRODUCTION	4
<i>Key Issues - E-Safety Concerns</i>	<i>4</i>
<i>The Ranger Guardian Solution</i>	<i>4</i>
FUNCTIONAL SUMMARY	5
<i>Visibility.....</i>	<i>5</i>
<i>Local Control</i>	<i>5</i>
<i>Management</i>	<i>5</i>
SOLUTION COMPONENTS.....	6
LOGGING AND REPORTING OF VIOLATIONS.....	6
APPLICATION ENABLING/BLOCKING	6
THUMBNAIL VIEWS OF VIOLATION CAPTURE.....	6
IMAGE ANALYSIS.....	6
WEB SITE ENABLING/BLOCKING	6
DYNAMIC WEB SITE BLOCKING	7
CONTEXT-SENSITIVE WEIGHTING.....	7
EMAIL ALERTS	7
USE BASED ON ACCEPTANCE OF THE ACCEPTABLE USER POLICY	7
‘PLUG AND PLAY’ SOLUTION.....	7
TAMPER PROOF AND SECURE SOLUTION.....	7
HOW IT WORKS	8
FEATURES SUMMARY	9
SYSTEM REQUIREMENTS	10
SAMPLE CUSTOMERS	11

Ranger Guardian Product Overview

For the educational market, Ranger Guardian is the only e-safety solution that monitors text in every application whether the PC is being used on or off the school network. This means that cyber bullying or cries for help are detected and your pupils and school are protected.

About Sentinel	Ranger Guardian Key Features
<ul style="list-style-type: none"> • Established in 1999 • 2500 School customers • Solutions used in 25% of Secondary Schools and Academies • Continued rapid growth in Primary schools • Over 50 accredited partners nationwide • Full range of professional services: installation, project management, training, customer support and consultancy. 	<ul style="list-style-type: none"> • Logs Acceptable Use Policy violations and websites • Image analysis & capture • Violations grouped by categories (e.g. Abuse, Bullying, etc) • Multiple violation & web reports • Application Blocking • Dynamic web site blocking • Embedded/Non-embedded word processing • Exclude Word/Phrase Library
Sentinel Support Services and Performance	Sample Sentinel Customers
<ul style="list-style-type: none"> • Web support facility for FAQs, upgrade downloads, etc. • Dedicated team of Helpdesk Engineers and Trainers • Choice of self installation or by accredited partner • Project Management team for larger installations • 82% customer help desk approval* • 92% installation satisfaction* • Sentinel User Group and forum <p>*Performance stats based on 2007 customer survey</p>	<ul style="list-style-type: none"> • Perins Community College • Newcastle College • Falmer High School • Gateacre Community Comprehensive School • Samuel Lucas JMI School • St Thomas More Catholic Comprehensive • Churston Grammar • Ferryhill Business & Enterprise College • Swanmore Middle School • St Joseph's College • Oldway Primary School • The Bridge Academy (PRU) • Mill Chase Community Technology College

Introduction

Ranger Guardian is an e-monitoring application designed to help schools enforce the Acceptable Use Policy (AUP) governing IT resources in schools. Ranger Guardian monitors the screen display and triggers a capture if the content is a violation of the specified AUP. The appropriate person in the

- Logs AUP violations and websites
- Image analysis & capture
- Violations grouped by categories (e.g. Abuse, Bullying, etc)
- Multiple violation & web reports
- Application Blocking
- Dynamic web site blocking
- Embedded/Non-embedded word processing
- Exclude Word/Phrase Library

organisation is alerted so further action can be taken. This enables organisations, particularly educational establishments, to meet their e-safety obligations. Ranger Guardian provides a variety of violation reports grouped by user, severity, violation libraries etc. It also monitors and logs web sites visited and enables the administrator to allow or block access to specified sites.

The captured data is stored securely in a proprietary database on the tamper proof Ranger Guardian server.

If required, we can install Ranger Guardian on your own choice of hardware upon special request for large centrally managed solutions.

Key Issues - E-Safety Concerns

The increase in Information Communications Technology (ICT) usage, in particular web based forms of communication, has led to increasing concerns about cyber bullying, paedophile grooming and access to inappropriate material for many educational establishments. There is a need for these establishments to ensure that pupils can use ICT resources in a safe and secure environment and that all users adhere to the Acceptable Use Policy.

The Ranger Guardian Solution

Ranger Guardian resolves these issues by monitoring for illegal and inappropriate activity involving bullying, paedophile grooming, racism, drugs, weapons, terrorism, gambling and abuse. The creation of specific violation categories enables better reporting of violations and consequently, better management and implementation of an appropriate e-safety strategy.

Ranger Guardian is a client server solution that plugs seamlessly into the host network. The client application runs on devices (usually PCs)

connected to the network. It monitors the screen display for inappropriate content (text and images) and captures and uploads any violations of the AUP to the tamper proof Ranger Guardian Server.

Ranger Guardian delivers very informative and powerful reports enabling inappropriate activities to be promptly and effectively addressed by the appropriate staff.

The screenshot displays the Ranger Guardian Administration Console. At the top, it shows the user is logged in as 'Admin' on 04/08/2010. Below the navigation tabs, there is a table titled 'Viewed Violations' with columns for 'User', 'Application / Source', 'Severity', 'Library', 'Date', 'View', and 'Report'. The table contains several rows of violation data, with some rows highlighted in green and others in red. The interface also includes a search bar and various control buttons.

Functional Summary

	Function	
Visibility		
Reports	Generate pre-built reports on captured violation data	✓
Offline Monitoring	Monitor violations and log website visits when not connected to the host network	✓
	Log websites	✓
Automatic Notification	Email alerts	✓
Local Control		
	Automatic monitoring of screen and keyboard activity.	✓
Inappropriate Activities	Capture, save and record inappropriate activities pertaining to words and phrases	✓
Inappropriate Images	Automatic capture of inappropriate images.	✓
	Dedicated and easily updated library of words and phrases	✓
	Display schools AUP and log acceptance of AUP by user	✓
	Administrators can add own their keywords and phrases.	✓
	Allow/Block Applications & Websites	✓
Management		
	Application supplied pre-configured and ready for use	✓
Management Console	Web browser interface	✓
	Remotely install the client program on client PCs	✓
System Access	Ability to create control and access groups	✓
	Ability to set reporting access rights.	✓
	Built-in defence mechanism to prevent unauthorized removal or virus attacks.	✓

Solution Components

Logging and Reporting of Violations

Words and phrases that violate the AUP will be logged and the appropriate person alerted by email. Ranger Guardian includes reports to show violations grouped by user, severity, phrases, period and domain.

- Management, implementation and enforcement of Acceptable Use Policies (AUP's)
- Enhanced pupil safety and behaviour
- Insights into pastoral care issues
- Identify breaches of security (e.g. inappropriate use of the administrator password)

Application Enabling/Blocking

Applications can be enabled or disabled on the PC based on the user profile or group policy.

- Improves security and reduces the risks associated with running unlicensed software
- Improves pupil productivity
- Set sanctions (e.g. temporary block access to the internet for set users and time periods)

Thumbnail views of violation capture

Ranger Guardian includes thumbnail views of screen captures.

- Improved management of violations by enabling quicker processing of violation captures

Image Analysis

Ranger Guardian is able to analyse images on websites for pornographic content and trigger a violation capture based on assessment of the image(s)

- Stops viewing or uploading/downloading of pornographic material

Web site Enabling/Blocking

Web sites can be blocked or enabled as appropriate based on user profile or group policy.

- Offers the ability to block access to web sites at local level
- Reduces off-tasking activities

Dynamic Web Site Blocking

Web sites can be blocked based on keyword/phrase severity and frequency at which these keywords/phrases occur.

- Offers additional layer of screening and web site blocking based on screen content. Particularly useful for blocking inappropriate sites accessed by proxy bypass web sites or other sites not covered by existing blocking and filtering software
- Reduces off-tasking activities

Context-Sensitive Weighting

Violation capture threshold can be configured using Application Weighting and Text/Phrase severity value

- Increased accuracy of violation reporting

Email Alerts

Ranger Guardian sends email alerts of violations that meet defined criteria to designated personnel.

- Ensures timely notification of inappropriate activity to key personnel

Use based on acceptance of the Acceptable User Policy

Ranger Guardian includes an option requiring the user to accept the AUP at boot-up/logon or access is denied.

- Enables legal agreement of the AUP

'Plug and play' solution

- Easy installation and deployment of server solution
- Easy software deployment of msi client using Active Directory
- No additional software licenses or hardware required to run solution

Tamper proof and secure solution

- Violations data cannot be deleted or manipulated. Guaranteed integrity of evidence
- Proprietary operating system and built-in defence mechanisms prevent authorized access

How It Works

Ranger Guardian is delivered as a 'plug and play' solution using proprietary hardware ready to connect to the network. The client applet is installed on each PC to be monitored by simply deploying and running the client installation program. Once installed, each client will automatically update to a newer version if one becomes available on the Ranger Guardian server.

Ranger Guardian can be deployed in a variety of ways depending on requirement. Some examples include;

- Locally hosted solution (e.g. Ranger Guardian server in an individual school network)
- Centrally hosted solution (e.g. Ranger Guardian server at a Local Authority (LA) or Grid level with schools having remote access over a Wide Area Network (WAN) to view and manage violation captures.
- Ranger Guardian server hosted at secondary schools with primary schools remotely accessing the server over the WAN.

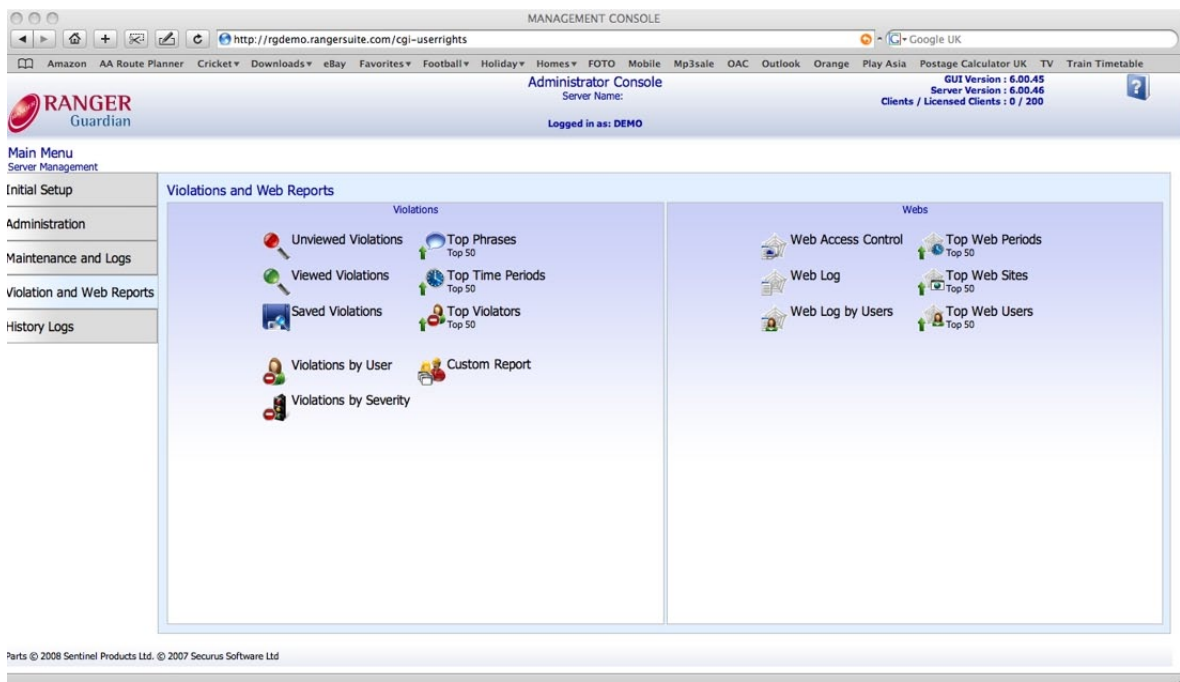
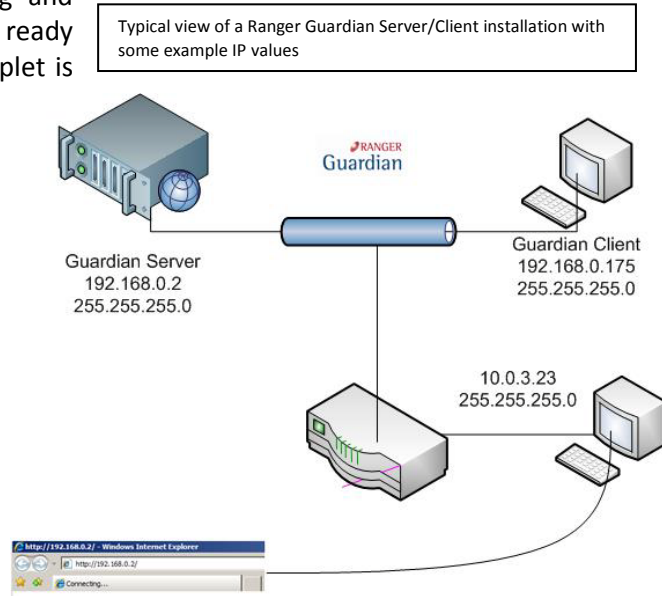


Figure 1 - Administration Console

Features Summary

Designed specifically for education	✓
Monitors text in every application	✓
Automatic Alerts of inappropriate activity	✓
Updated pre-defined word and phrase lists	✓
Screenshot evidence of all violations	✓
Management reporting	✓
Browser based user interface provides access to view violations from any PC at any time	✓
Reports on laptop misuse – even when disconnected from the network	✓
Email Alerts	✓
Fully customisable library – add extra words and phrases	✓
Adapt severity rating based on pastoral concerns	✓
At a glance, Thumbnail Views	✓
Application Blocking	✓
Web Activity Reporting	✓
Web Site Blocking	✓
Tamper Proof hardware	✓
Image Analysis	✓
Dynamic Web Blocking – Automatically block inappropriate web sites	✓
One click, quick access reporting	✓

System Requirements

Solution	Ranger Guardian	
Server	LCD2 (Box)	SME2 (Rack Mount)
Server Operating system	Proprietary	Proprietary
Server RAM	256MB	512MB
CPU	VIA X86 MHz	Intel P4 2.8 GHz
Network	10/100	10/100
Hard Disk	80GB	160GB
Power Consumption	150 Watts	250 Watts
Power	110/220-250v ac	110/220-250v ac
Dimensions	305D * 280D * 70H	426W * 419D * 43.5H
Number of Users	3,000	10,000
Client Comms Port	Port 87 UDP	Port 87 UDP
IP Configuration	Dynamic or Static	Dynamic or Static
Client OS	Windows based clients (Windows 2000, XP, Vista) Minimum client PC specification P233 with 64Mb RAM Citrix/Thin Client 10/100 Base Ethernet network connection TCP/IP UDP port 80,87 opened between VLANs Be a member of the local administrator group to install the client	

Network Configuration:

By default, the Ranger Guardian server will pick up a dynamically allocated IP address. It is recommended that once the server is operational and before installing the client to configure a static IP address (see manual for instructions), you should reserve the IP address in your DHCP server to ensure there are no IP conflicts.

If you have any queries regarding system pre-requisites, please contact your Ranger reseller or visit the Ranger web site: www.rangersuite.com

Sample Customers

Establishment
Bedford High School
Bourton Meadow School
Brent Education Tuition Service
Central Foundation Boys School
Great Baddow Centre SAIS
Kimberley Comprehensive School
Lady Manners School
Lickhill Lodge First School
Perins School
Phoenix High School
Queen Elizabeth Grammar School (Wakefield)
Romsey Community School
Rossall School
Samuel Cody School
Sandown High School
St. Aidans School
St. Lawrence C of E (Aided) Junior School
Stanville Primary School
The Community College, Bishop's Castle
Wyndham High School
Yardley Primary School
Yateley Manor School